

TAP A NEW ENERGY CLASS



VENEZIA OVERVIEW H150

Multidecks

New presence in the Venezia supermarket line: the VENEZIA H150 OVERVIEW. It is a semi vertical multidecks with squared shapes that helps the Torino H150 semi-vertical freezer in completing the central and promotional display of each type of supermarket and especially those with limited space. The VENEZIA H150 semimural is a chiller for fresh products both sausages and dairy products and pre-packed meat.



VENEZIA OVERVIEW H150 DOORS

VENEZIA OVERVIEW H150 - Multidecks

Power supply

Remote

Climatic classes

3 M1



Exhibition categories



Chilled drinks



Dairy, milk, cheese



Delicatessen



Food to go



Packed meat



Ready meals and salads



Sausages & salami



Snacks / Sandwiches

Standard features

- 3 shelves with priceholders
- Digital Thermometer
- Expansion valve
- Fan assisted cooling
- Grey ABS bumper
- Low Multideck joinable back to back with headcase
- Single top lighting
- Terminal board
- Ultra-panoramic hinged and double glazed doors
- White internal body

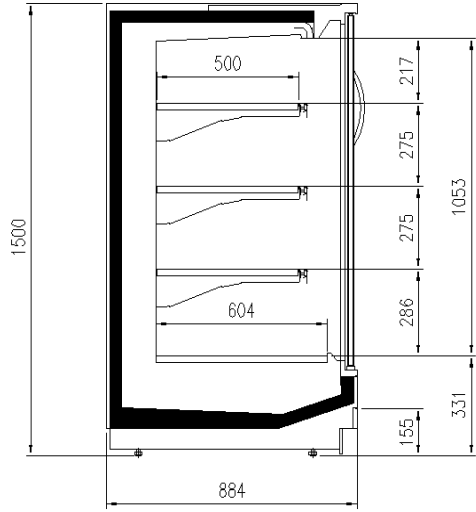
Accessories

- CO2 refrigeration system
- Control board Master and Slave
- Dividers
- EC Fans
- Electronic control
- Electronic valve
- Internal and external RAL colours
- LED lighting
- Shelf lighting LED
- Stainless steel bumper

Available dimensions

External depth (mm)	900
Height (mm)	1500;1650
Length without side walls (mm)	1250;1875;2500;3750;HE
	ADCASE
Shelves' depth (mm)	500
Shelves' rows (N°)	3

CROSS SECTIONS



H150 P90

VENEZIA OVERVIEW H150 OPEN

VENEZIA OVERVIEW H150 - Multidecks

Power supply

Remote

Climatic classes

3 M2



Exhibition categories



Chilled drinks



Dairy, milk, cheese



Delicatessen



Food to go



Impulse



Ready meals and salads



Sausages & salami



Snacks / Sandwiches

Standard features

- 3 shelves with priceholders
- Digital Thermometer
- Expansion valve
- Fan assisted cooling
- Grey ABS bumper
- Low Multideck joinable back to back with headcase
- Single top lighting
- Terminal board
- White internal body

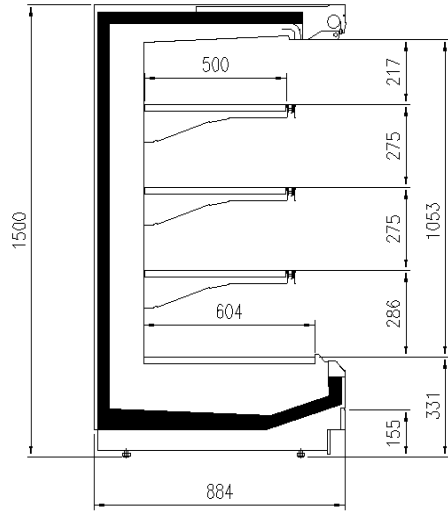
Accessories

- CO2 refrigeration system
- Control board Master and Slave
- Dividers
- EC Fans
- Electronic control
- Electronic valve
- Internal and external RAL colours
- LED lighting
- Manual night blind
- Panoramic double glass hinged doors
- Shelf lighting LED
- Stainless steel bumper

Available dimensions

External depth (mm)	900
Height (mm)	1500;1650
Length without side walls (mm)	1250;1875;2500;3750;HE
(mm)	ADCASE
Shelves' depth (mm)	500
Shelves' rows (N°)	3

CROSS SECTIONS



H150 P90

VENEZIA OVERVIEW H150 OPEN

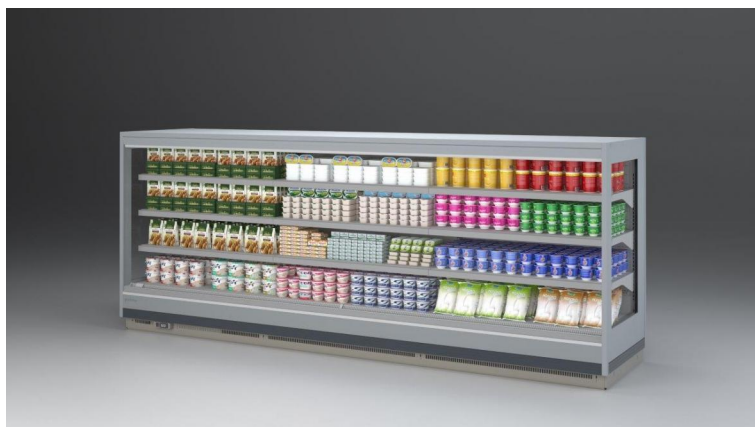
VENEZIA OVERVIEW H150 - Multidecks

Power supply

Remote

Climatic classes

3 M2



Available colours

1015

1021

2011

3002

3020

5005

5012

6018

7035

7037

9006

9010

9011

Exhibition categories



Chilled drinks



Dairy, milk, cheese



Delicatessen



Food to go



Impulse



Ready meals and salads



Sausages & salami



Snacks / Sandwiches

Standard features

3 shelves with priceholders
Digital Thermometer
Expansion valve
Fan assisted cooling
Grey ABS bumper
Low Multideck joinable back to back with headcase
Single top lighting
Terminal board
White internal body

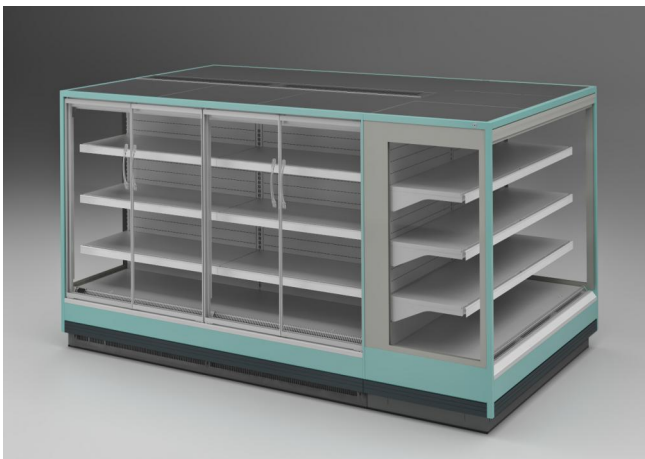
Accessories

CO2 refrigeration system
Control board Master and Slave
Dividers
EC Fans
Electronic control
Electronic valve
Internal and external RAL colours
LED lighting
Manual night blind
Panoramic double glass hinged doors
Shelf lighting LED
Stainless steel bumper

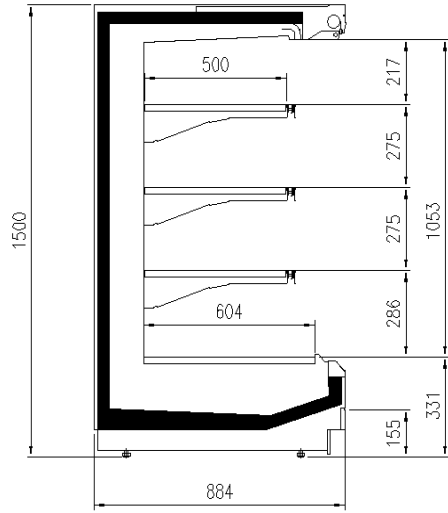
Available dimensions

External depth (mm)	900
Height (mm)	1500;1650
Length without side walls (mm)	1250;1875;2500;3750;HE
	ADCASE
Shelves' depth (mm)	500
Shelves' rows (N°)	3

A SELECTION FROM OUR INSTALLATION



CROSS SECTIONS



H150 P90



Pastorfrigor S.p.A.

Reg. Gabannone, 4 Z.I. · 15033 Terruggia (AL) · Italy
Tel. +39 0142 433 711 · Fax +39 0142 433 701 · info@pastorfrigor.it
P.IVA IT00578270068 | REA AL-00578270068
www.pastorfrigor.it