

# TAP A NEW ENERGY CLASS



# PRINCE VDR

## Counters

Commendable straight glass display with sound technology. Solid performance and many functional options make the Prince straight glass integral serveover counter the unmistakable choice for your fresh food sales.



# PRINCE VDR CC - MEAT

## PRINCE VDR - Counters

### Power supply

Plug in

### Climatic classes

3 M1



### Exhibition categories



Fresh meat



Packed meat

### Standard features

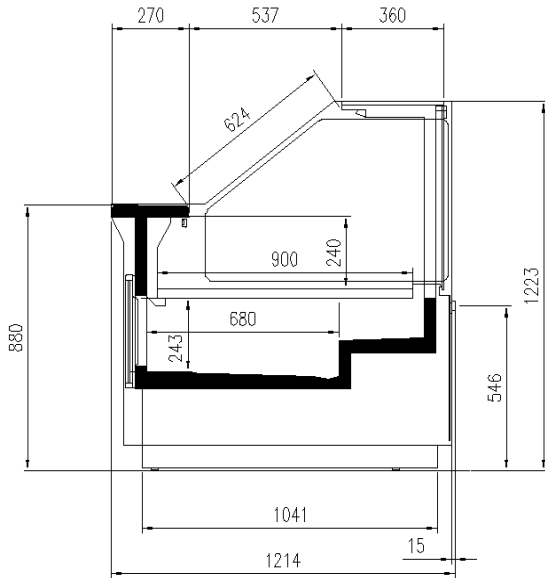
- Components compliant with R290 use
- Electronic control
- Fan assisted cooling
- LED lighting
- Plug-in cabinet, multiplexable linear modules
- R290 gas
- Refrigerated understorage with doors
- St. steel display plates
- Straight Glass
- White internal body

### Accessories

- CO2 refrigeration system
- Electric defrost
- Front anti-mist ventilation
- Intermediate glass shelves
- Internal and external RAL colours
- Plexiglass back closure
- St. steel internal body
- Stainless steel bumper
- Steps display plates
- Wooden Crate

# CROSS SECTIONS

---



PRINCE VDR

# PRINCE VDR SC - MEAT

## PRINCE VDR - Counters

### Power supply

Remote

### Climatic classes

3 M1



### Exhibition categories



Packed meat

### Standard features

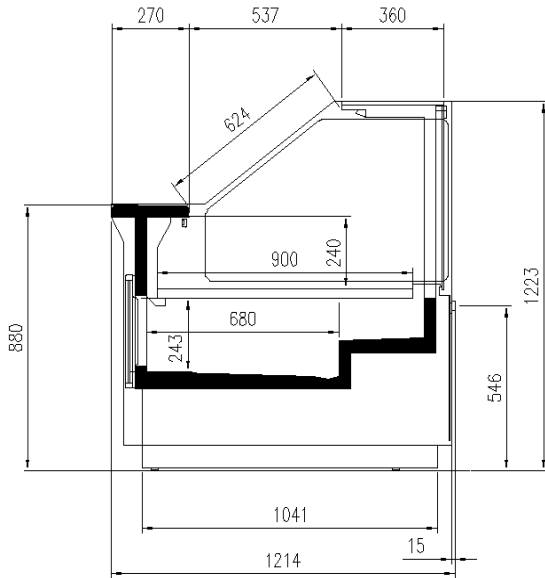
- Expansion valve
- Fan assisted cooling
- Front anti-mist ventilation
- LED lighting
- Refrigerated understorage with doors
- Remote cabinet with closed front
- Remote cabinet, multiplexable linear and corner modules
- St. steel display plates
- Straight Glass
- Terminal board
- White internal body

### Accessories

- Available with gas R290
- Available with gas R452 A
- CO2 refrigeration system
- Control board Master and Slave
- Electric defrost
- Intermediate glass shelves
- Internal and external RAL colours
- Plexiglass back closure
- St. steel internal body
- Stainless steel bumper
- Steps display plates
- Wooden Crate

# CROSS SECTIONS

---



PRINCE VDR

# PRINCE VDR SC - MEAT

## PRINCE VDR - Counters

### Power supply

Remote

### Climatic classes

3 M1



### Available colours

1015

1021

2011

3002

3020

5005

5012

6018

7035

7037

9006

9010

9011

### Exhibition categories



Packed meat

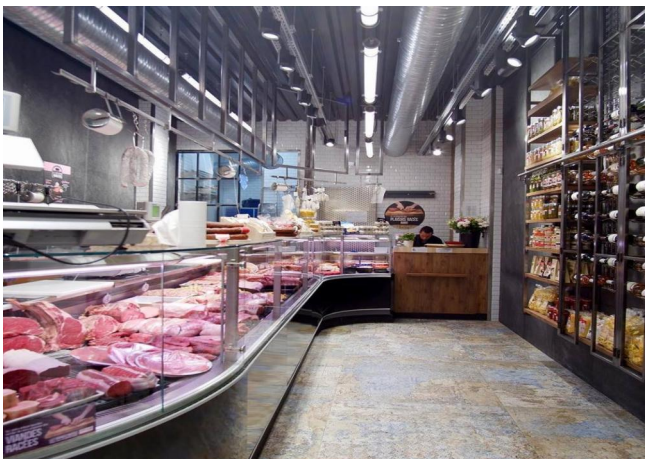
### Standard features

- Expansion valve
- Fan assisted cooling
- Front anti-mist ventilation
- LED lighting
- Refrigerated understorage with doors
- Remote cabinet with closed front
- Remote cabinet, multiplexable linear and corner modules
- St. steel display plates
- Straight Glass
- Terminal board
- White internal body

### Accessories

- Available with gas R290
- Available with gas R452 A
- CO2 refrigeration system
- Control board Master and Slave
- Electric defrost
- Intermediate glass shelves
- Internal and external RAL colours
- Plexiglass back closure
- St. steel internal body
- Stainless steel bumper
- Steps display plates
- Wooden Crate

# A SELECTION FROM OUR INSTALLATION



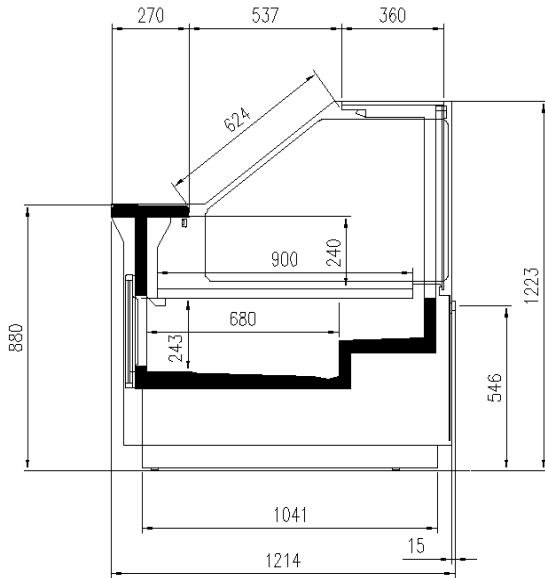






# CROSS SECTIONS

---



PRINCE VDR



**Pastorfrigor S.p.A.**

Reg. Gabannone, 4 Z.I. · 15033 Terruggia (AL) · Italy  
Tel. +39 0142 433 711 · Fax +39 0142 433 701 · [info@pastorfrigor.it](mailto:info@pastorfrigor.it)  
P.IVA IT00578270068 | REA AL-00578270068  
[www.pastorfrigor.it](http://www.pastorfrigor.it)