

# TAP A NEW ENERGY CLASS



# VERONA OVERVIEW DOORS

## Multidecks

The VERONA OVERVIEW is produced with a new upper profile with minimal and gently squared lines, which bring panoramic views and give visibility to the product. The new top profile will be 34 mm high and will be used both in the configurations with doors and without doors of this multidecks. This model presents structural innovations that are not only aesthetic but also functional like the new bumper trolley which will be integrated into the front of the wall case, as for the entire new production. The assembly that makes up the price holder will also be new with a different hooking system.



# VERONA OVERVIEW DOORS

## VERONA OVERVIEW DOORS - Multidecks

### Power supply

Remote

### Climatic classes

3 M1



### Available colours

1015

1021

2011

3002

3020

5005

5012

6018

7035

7037

9006

9010

9011

### Exhibition categories



Beers & wines



Chilled drinks



Dairy, milk, cheese



Delicatessen



Food to go



Packed meat



Ready meals and salads



Sausages & salami



Snacks / Sandwiches

### Standard features

4 or 5 shelves with price holder depending on the height  
Digital Thermometer  
EC Fans  
Expansion valve  
Grey ABS bumper  
Terminal board  
Ultra-panoramic hinged and double glazed doors  
vertical led lighting

### Accessories

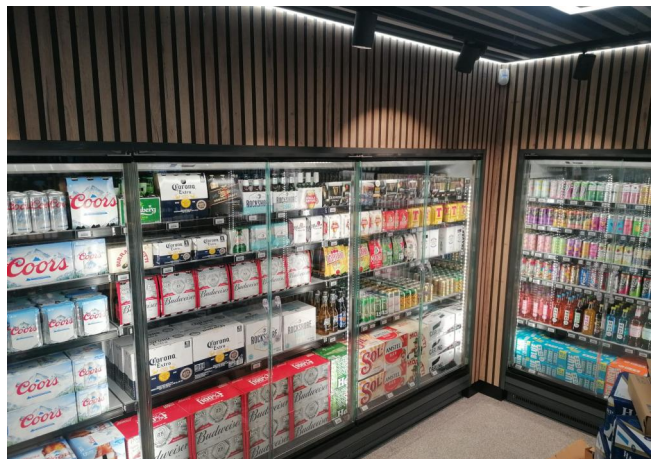
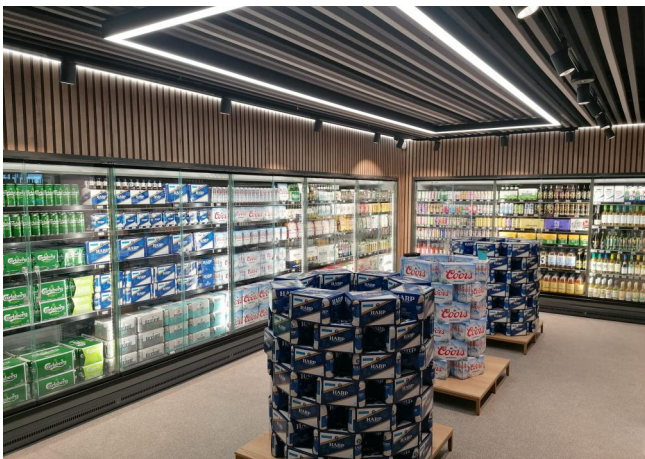
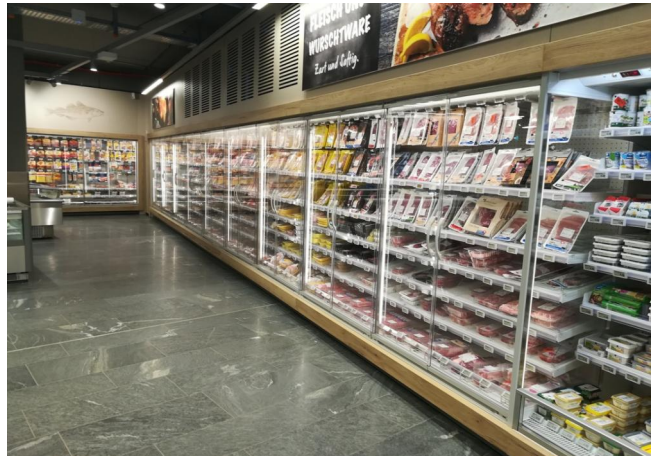
CO2 refrigeration system  
Dividers  
Electronic control  
Electronic valve  
Internal and external RAL colours  
Shelf lighting LED  
Stainless steel bumper

### Available dimensions

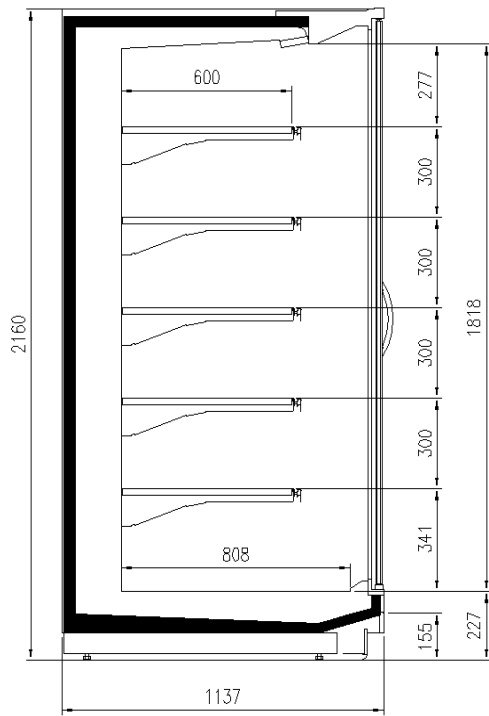
|                                |                      |
|--------------------------------|----------------------|
| External depth (mm)            | 1050 - 1150          |
| Height (mm)                    | 2050 - 2160          |
| Length without side walls (mm) | 1250 - 1875 - 2500 - |
| Shelves' depth (mm)            | 3750                 |
|                                | 500/600              |

# A SELECTION FROM OUR INSTALLATION

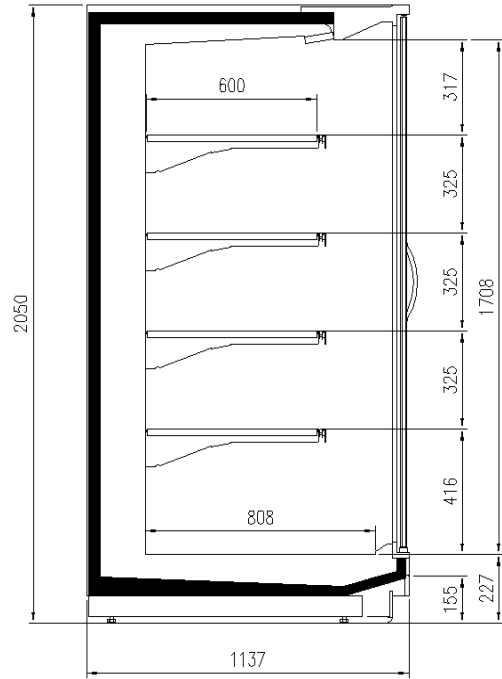
---



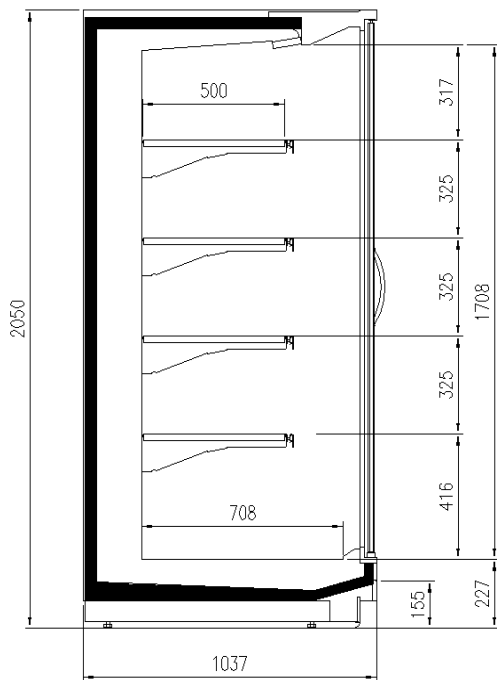
# CROSS SECTIONS



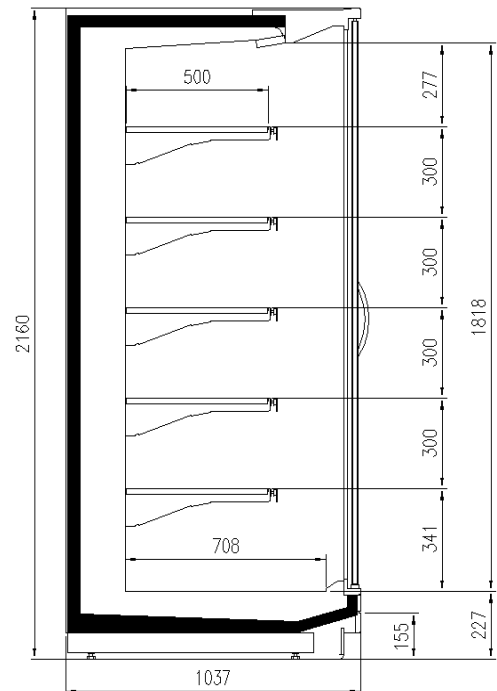
H216 P110



H205 P110



H205 P100



H216 P100



**Pastorfrigor S.p.A.**

Reg. Gabannone, 4 Z.I. · 15033 Terruggia (AL) · Italy  
Tel. +39 0142 433 711 · Fax +39 0142 433 701 · [info@pastorfrigor.it](mailto:info@pastorfrigor.it)  
P.IVA IT00578270068 | REA AL-00578270068  
[www.pastorfrigor.it](http://www.pastorfrigor.it)