

# TAP A NEW ENERGY CLASS



# VENEZIA OVERVIEW OPEN

## Multidecks

The new OVERVIEW supermarket line brings important functional elements and innovation to supermarket production line. The new OVERVIEW LINE will be proposed in the variants already available for more than fifteen years in PASTORFRIGOR; - freezer walls, full glass frozen wall cabinet (TORINO OVERVIEW) or combined doors + well cabinet (MILANO OVERVIEW); - Wall cabinets for positive temperature closed with doors or open, with ultra-low front (VERONA OVERVIEW) and with medium front (VENEZIA OVERVIEW), and also in the ROLL IN version without front or with lifting up front (VENEZIA ROLL IN OVERVIEW); - Islands for frozen foods with or without sliding glass lids, in the double deck version (SARDEGNA OVERVIEW) or single well (CAPRI OVERVIEW AND SICILIA 110/150 OVERVIEW)



# 'VENEZIA OVERVIEW OPEN'

## VENEZIA OVERVIEW OPEN - Multidecks

### Power supply

Remote

### Climatic classes

3 M2



### Available colours

1015

1021

2011

3002

3020

5005

5012

6018

7035

7037

9006

9010

9011

### Exhibition categories



Beers & wines



Chilled drinks



Dairy, milk, cheese



Delicatessen



Food to go



Fruit and vegetables



Impulse



Ready meals and salads



Sausages & salami



Snacks / Sandwiches

### Standard features

4 or 5 shelves with price holder depending on the height  
Expansion valve  
Remote cabinet, with multiplexable linear modules  
Single top lighting  
Terminal board  
White internal body

### Accessories

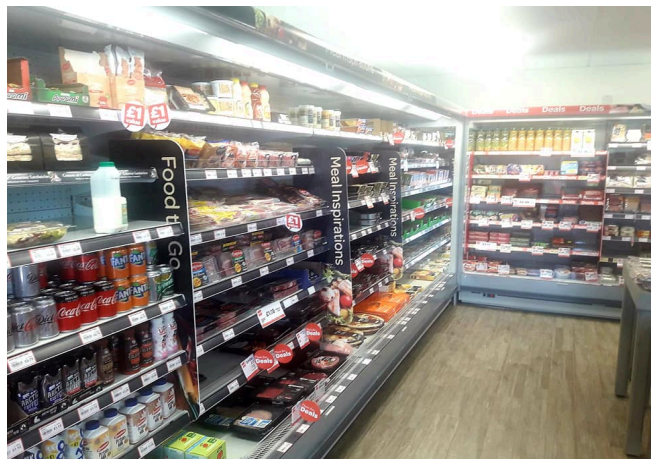
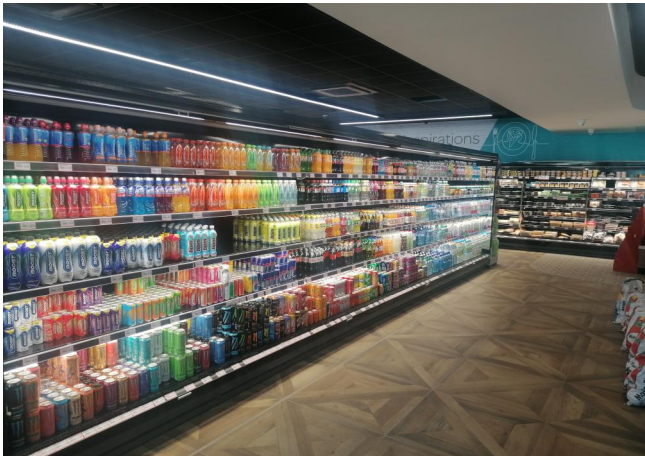
Controller for electronic valve  
Base Grids  
CO2 refrigeration system  
Electronic valve  
Grid dividers  
Internal and external RAL colours  
LED lighting  
Manual or electronic night blind  
Movable and fix divider

### Available dimensions

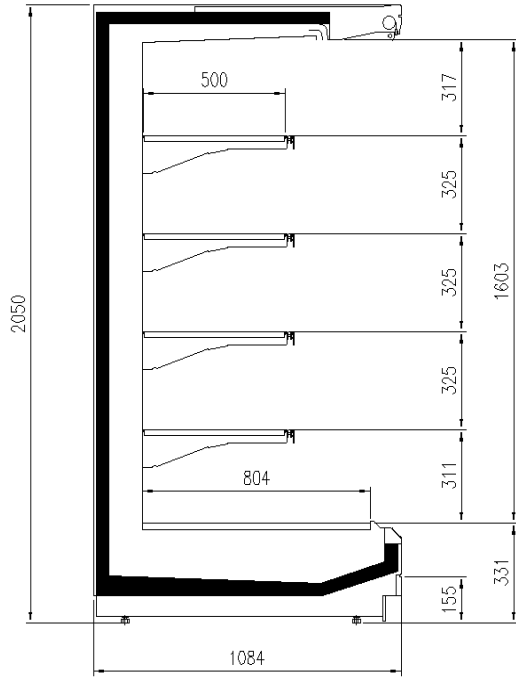
External depth (mm) 750-900 -1000 -1100  
Height (mm) 2050- 2160  
Length without side walls (mm) 1250 -1875 - 2500 - 3750  
Shelves' depth (mm) 500

# A SELECTION FROM OUR INSTALLATION

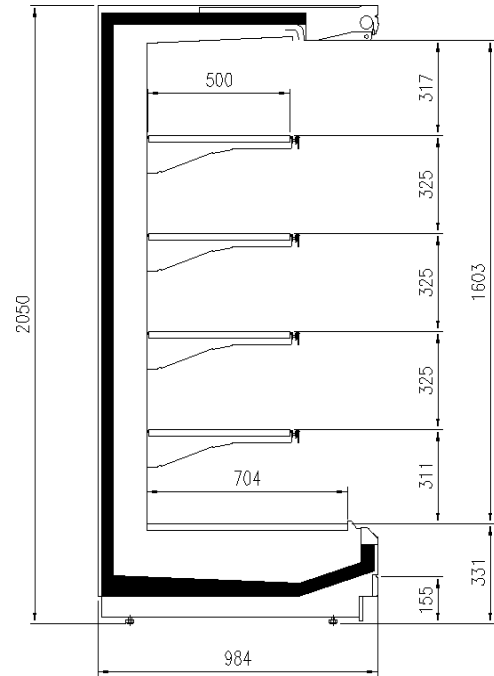
---



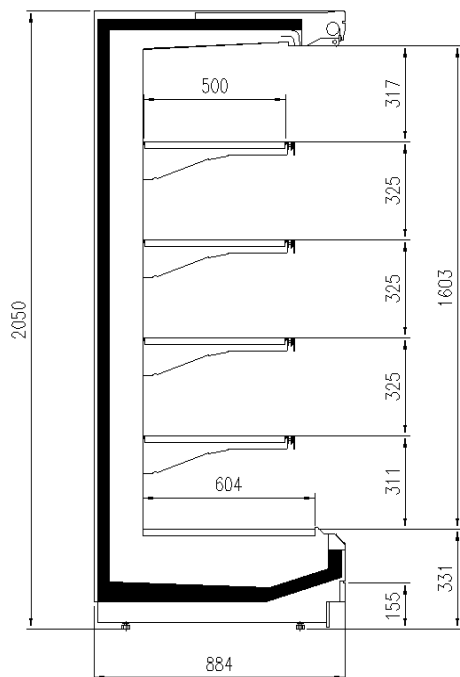
# CROSS SECTIONS



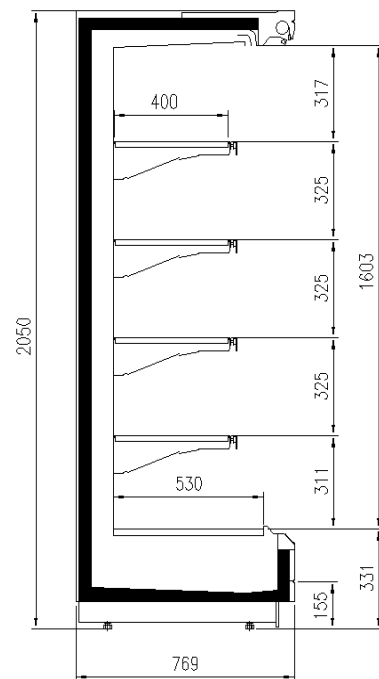
H205 P110



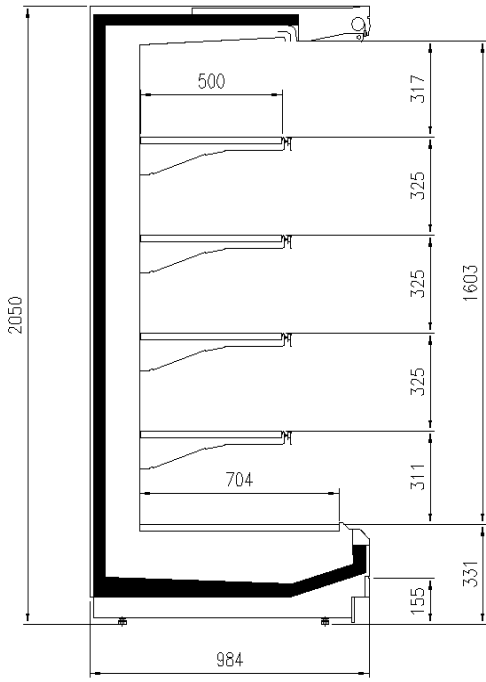
H205 P100



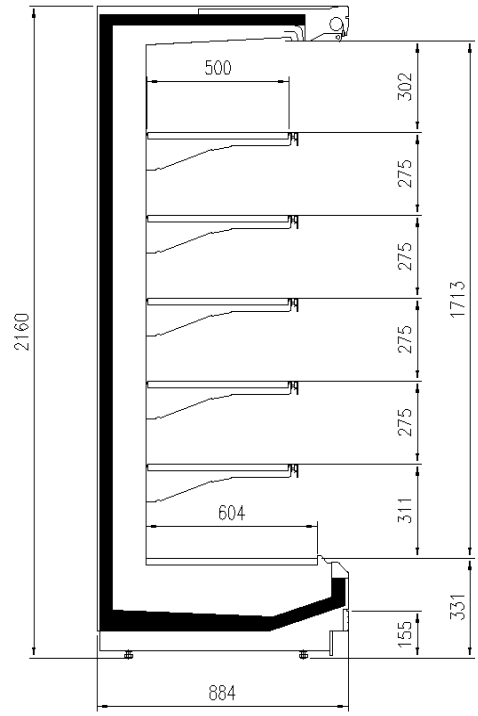
H205 P90



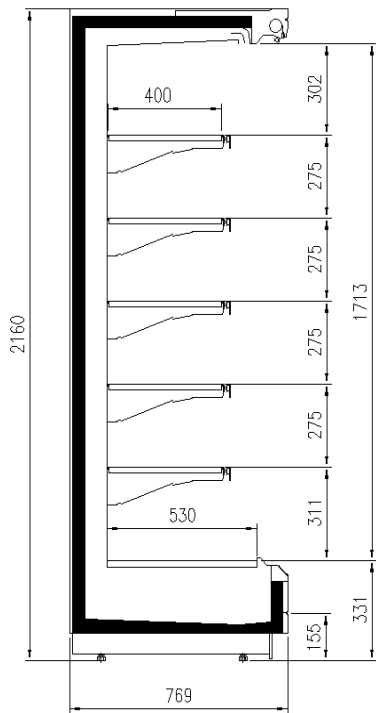
H205 P75



H205 P100



H216 P90



H216 P75



**Pastorfrigor S.p.A.**

Reg. Gabannone, 4 Z.I. · 15033 Terruggia (AL) · Italy  
Tel. +39 0142 433 711 · Fax +39 0142 433 701 · [info@pastorfrigor.it](mailto:info@pastorfrigor.it)  
P.IVA IT00578270068 | REA AL-00578270068  
[www.pastorfrigor.it](http://www.pastorfrigor.it)