

TAP A NEW ENERGY CLASS



EXCELSIOR

Counters

The continuous search for technological innovation and new aesthetic lines has led Pastorfrigor to create the EXCELSIOR line. It is a new line of traditional remote service counters for the best display of fresh and pre-packed meat, with a large display volume and internal finishes in stainless steel. The new design lines and elegant shapes catch the eye, both in the display area and externally on the peculiar sidewalls and the decoration. The EXCELSIOR showcase is available with ventilated or double static refrigeration system for remote installation, but also with a system for use with CO2 and glycol refrigerant. The semi plug-in DOUBLE STATIC configuration is brand new to get CO2 and R290 double refrigeration, for the best performance together with energy saving and compliance with current regulations on refrigerant gases. Also for this line of showcases, the 180 cm high TOWER display unit is available, made up of 2 glass shelves plus a bottom shelf and with rear hinged doors which can be canalised with all the other modules.



EXCELSIOR 3M1

EXCELSIOR - Counters

Power supply

Remote



Available colours

1015

1021

2011

3002

3020

5005

5012

6018

7035

7037

9006

9010

9011

Exhibition categories



Dairy, milk, cheese



Delicatessen



Fresh meat



Packed meat



Ready meals and salads



Sausages & salami

Standard features

Expansion valve
Front anti-mist ventilation
LED lighting
Paintable or personalized front panels with optional RAL colors
Remote cabinet, multiplexable linear and corner modules
St. steel display plates
St. steel internal body
Terminal board

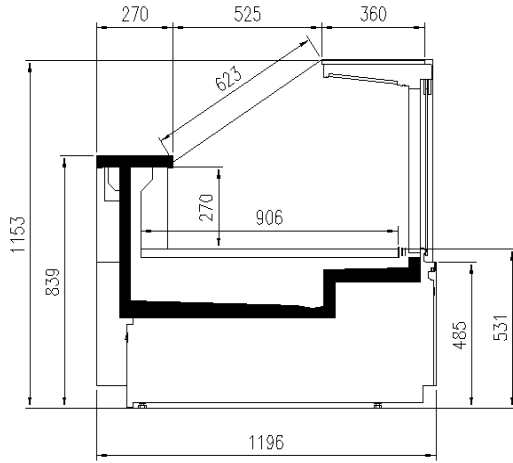
Accessories

Controller for electronic valve
Available with gas R455
Control board Master and Slave
Cutting Board
Double static refrigeration
Electronic control
Front LED lighting
Glycol refrigeration
Internal and external RAL colours
Movable and fix divider
Plexiglass back closure
Stainless steel bumper

Available dimensions

External depth (mm)	1196
Base deck depth (mm)	906
Corner Section	90EXT, 45EXT, 90INT, 45INT
Front Height (mm)	531
Height (mm)	1153
Length without side walls (mm)	937,1250,1875,2500,312
Thickness side walls (mm)	32

CROSS SECTIONS



EXCELSIOR



Pastorfrigor S.p.A.

Reg. Gabannone, 4 Z.I. · 15033 Terruggia (AL) · Italy
Tel. +39 0142 433 711 · Fax +39 0142 433 701 · info@pastorfrigor.it
P.IVA IT00578270068 | REA AL-00578270068
www.pastorfrigor.it