

# TAP A NEW ENERGY CLASS



# EXCELSIOR

## Counters

The continuous search for technological innovation and new aesthetic lines has led Pastorfrigor to create the EXCELSIOR line. It is a new line of traditional remote service counters for the best display of fresh and pre-packed meat, with a large display volume and internal finishes in stainless steel. The new design lines and elegant shapes catch the eye, both in the display area and externally on the peculiar sidewalls and the decoration. The EXCELSIOR showcase is available with ventilated or double static refrigeration system for remote installation, but also with a system for use with CO<sub>2</sub> and glycol refrigerant. The semi plug-in DOUBLE STATIC configuration is brand new to get CO<sub>2</sub> and R290 double refrigeration, for the best performance together with energy saving and compliance with current regulations on refrigerant gases. Also for this line of showcases, the 180 cm high TOWER display unit is available, made up of 2 glass shelves plus a bottom shelf and with rear hinged doors which can be canalised with all the other modules.



# EXCELSIOR 3M1

## EXCELSIOR - Counters

### Power supply

Remote



### Available colours

1015

1021

2011

3002

3020

5005

5012

6018

7035

7037

9006

9010

9011

### Exhibition categories



Dairy, milk, cheese



Delicatessen



Fresh meat



Packed meat



Ready meals and salads



Sausages & salami

### Standard features

- Expansion valve
- Front anti-mist ventilation
- LED lighting
- Paintable or personalized front panels with optional RAL colors
- Remote cabinet, multiplexable linear and corner modules
- St. steel display plates
- St. steel internal body
- Terminal board

### Accessories

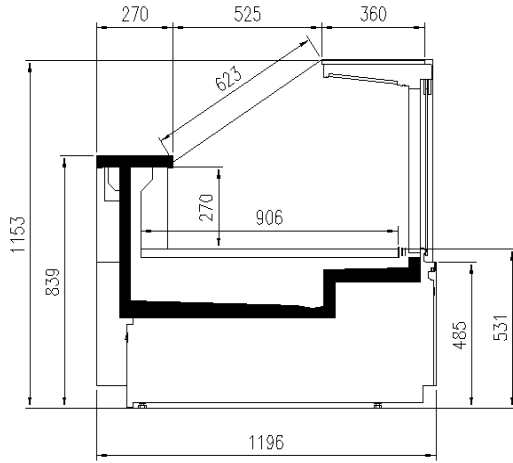
- Controller for electronic valve
- Available with gas R455
- Control board Master and Slave
- Cutting Board
- Double static refrigeration
- Electronic control
- Front LED lighting
- Glycol refrigeration
- Internal and external RAL colours
- Movable and fix divider
- Plexiglass back closure
- Stainless steel bumper

### Available dimensions

External depth (mm)	1196
Base deck depth (mm)	906
Corner Section	90EXT, 45EXT, 90INT, 45INT
Front Height (mm)	531
Height (mm)	1153
Length without side walls (mm)	937,1250,1875,2500,312
Thickness side walls (mm)	32

# CROSS SECTIONS

---



EXCELSIOR



**Pastorfrigor S.p.A.**

Reg. Gabannone, 4 Z.I. · 15033 Terruggia (AL) · Italy  
Tel. +39 0142 433 711 · Fax +39 0142 433 701 · [info@pastorfrigor.it](mailto:info@pastorfrigor.it)  
P.IVA IT00578270068 | REA AL-00578270068  
[www.pastorfrigor.it](http://www.pastorfrigor.it)